

B 391

Additional information please contact:

Borr Drilling Management DMCC
Level 28 Reef Tower, Cluster O
P.O. Box 36913
Jumeirah Lakes Towers, Dubai United Arab Emirates
+971-04-4487501

marketing@borrdrilling.com - www.borrdrilling.com

Standard Specification Jackup

General Description

Design / Generation	Baker Marine Europe Class
Constructing Shipyard	Promet Private Limited, Singapore
Year Entered Service / Significant Upgrades	1981
Classification.....	ABS,A1, Self-Elevating Drilling Unit
Flag	Liberia
Overall Dimensions.....	238 ft.long x 212 ft.wide x 27 ft deep
Legs	(3) 360 ft. long, Triangular
Drafts	17.75 ft at loadline
Accommodation	102 persons
Displacement.....	32,693 kips
Variable Deck.....	2,940 kips operating / 2,940 kips transit (spud cans full)
Transit Speed	up to 4 knots, @ 9,000 hp sea tug
Operating Water Depth	213 ft. designed / 250 ft. outfitted
Maximum Drilling Depth	25,000ft

Drilling Equipment

Derrick	Pyramid, Beam leg type; 160 ft high with 30 ft x 30 ft base
Hookload Capacity	1,600,000 lbs gross nominal capacity
Cantilever/ Drill floor	35 ft / 10 ft Port & Stbd
Drawworks	National 1625-DE Max hook load 1,250 kips with 12 lines. (3) x GE DC motors suitable for 1.625" drill line
Rotary Table	National 49.5" table opening, electric drive, rated 800 st
Top Drive	Varco Model TDS-4S Electric 650 Ton
Tubular Handling	Varco AR3200, 3-1/2" to 9-3/4" OD drill pipe & drill collar Make-up torque 100,000ft-lb Break-out torque 120,000ft-lb
Mud Pumps	(3) National 12-P-160 triplex pumps, each driven by 800 hp (GE AC motor) 4,250 psi rated
Solids Control	(4) Rigtech VSM 300 Shale Shakers

Power & Machinery

Main Power	(3) Caterpillar D399 diesel engines rated at 1,650kW at 1200rpm each with Caterpillar generator rated to 1,680kW
Emergency Power	(1) Caterpillar D379 diesel engine rated at 600hp at 1,200rpm with Caterpillar generator rated to 420kW

Storage Capacities

Fuel Oil.....	3,662 bbls
Liquid Mud.....	1,861 bbls
Base Oil	1,116 bbls
Brine.....	1,133 bbls
Drill Water	7,245 bbls
Potable Water	1,580 bbls
Bulk Material	(mud + cement) 12,000 cu-ft
Sack Storage	5,000 sacks

BOP & Well Control Equipment

BOP Rams	(1) Cameron Double "U" rams 20 3/4" 3k psi BOP
BOP Rams	(2) NOV 6012 Double "U" rams 13-5/8" 15k psi BOP (1)NOV 6012 Double "U" rams 13-5/8" 10k psi BOP (1) NOV 6012 Single "U" ram 13-5/8" 10k psi BOP
BOP Annular	(1) NOV SBOP 20-3/4" 3k psi annular preventer
BOP Annular	(1) Shaffer MSP 13-5/8" 10k psi annular preventer (1) XINDE 13 5/8" 5k annular preventer
BOP Handling	(1) Ingersoll Rand hoists, rated 37.5mt
Diverter	KFDJ 500, 37-1/2" diverter rated to 500psi with (3) 14" outlet lines

Mooring Equipment

Mooring Winches	(2) Baker Marine electric winches rated at 50,400 lbs pull; (2) ODIM electric winches at 110,231 lbs pull
Anchor Lines	3,281ft (Fwd) / 2,493 ft (Aft) x 2" galvanized wire rope
Anchors	(2) Baldt Danforth anchor, 10,080 lbs each

Cranes

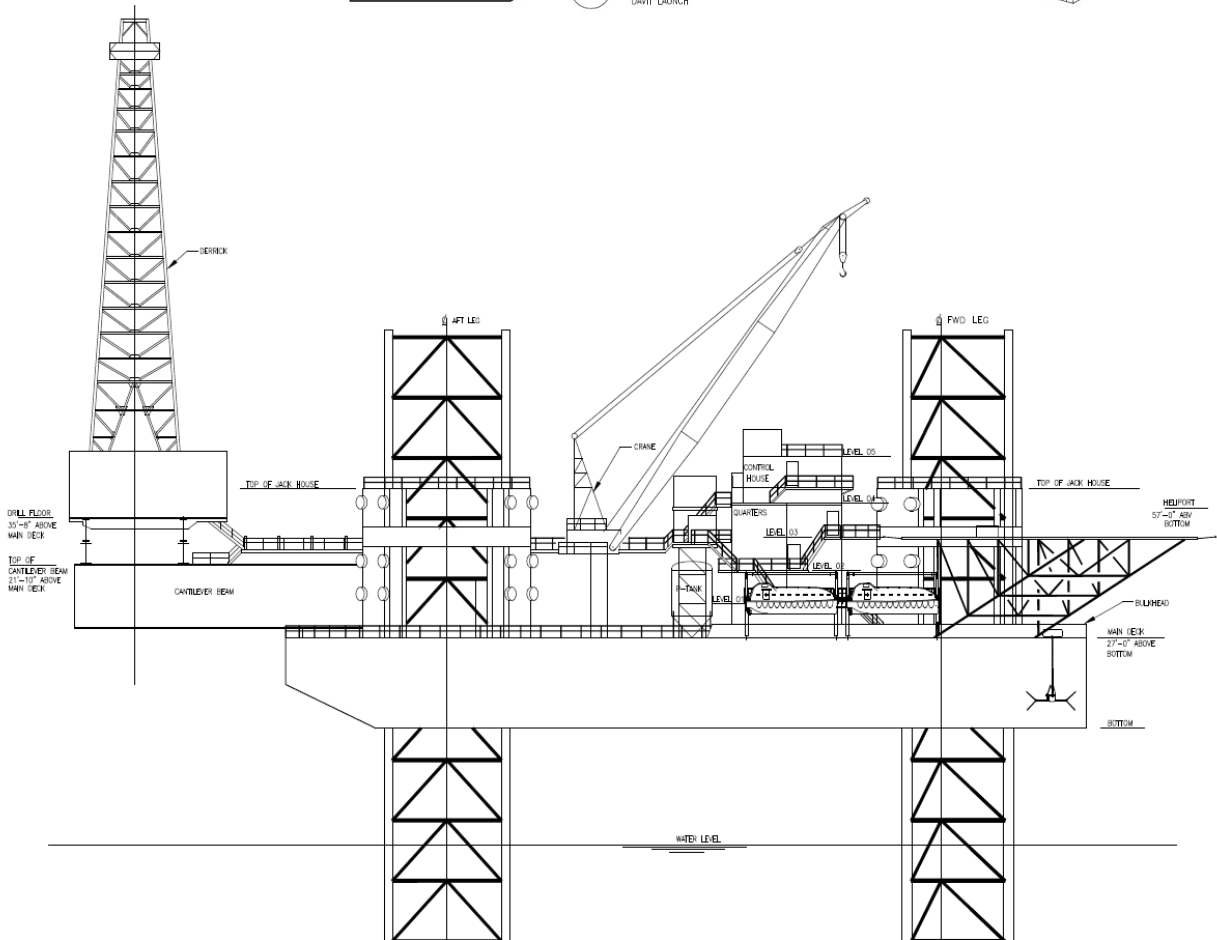
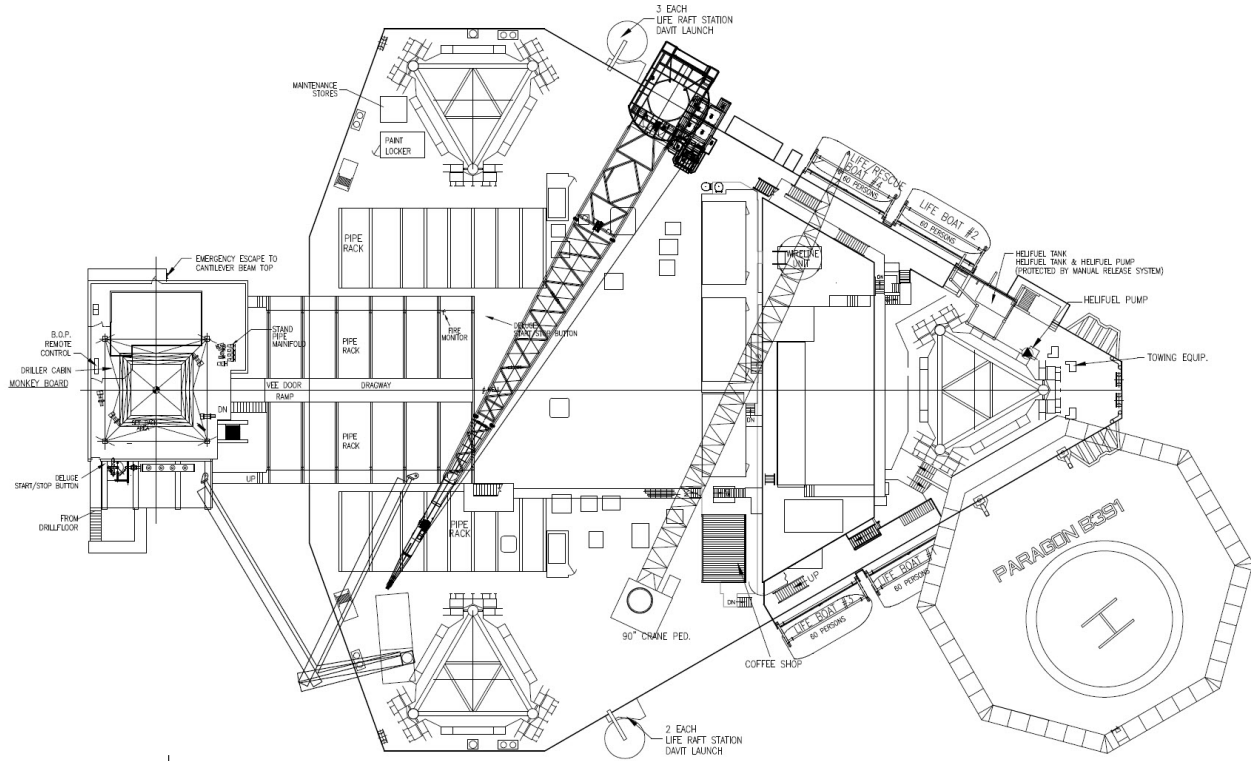
Cranes	(1) Huisman crane, 80mt capacity,160ft boom (1) National OS-435 crane, 50.53mt capacity,140ft boom
--------	---

Special Features & Other Information

Helideck	Rated for Sikorsky S-61 and S-92 helicopters. CAP 437
----------	---



These specifications are intended for general reference purposes only, as actual equipment and specifications may vary based upon subsequent changes, the contract situation and customer needs. All equipment shall be operated and maintained at all times, in compliance with Borr Drilling standard operating manuals, policies and procedures, and within its stated operational limits or continuous rated capacity, in order to assure maximum operational efficiency.



These specifications are intended for general reference purposes only, as actual equipment and specifications may vary based upon subsequent changes, the contract situation and customer needs. All equipment shall be operated and maintained at all times, in compliance with Borr Drilling standard operating manuals, policies and procedures, and within its stated operational limits or continuous rated capacity, in order to assure maximum operational efficiency.