

# Brage

## additional information please contact:

Borr Drilling Management DMCC  
 Level 28 Reef Tower, Cluster O  
 P.O. Box 36913  
 Jumeirah Lakes Towers, Dubai United Arab Emirates  
 +971-04-4487501  
 marketing@borrdrilling.com - www.borrdrilling.com

## High Specification Jackup

### General Description

Design / Generation .....	Friede & Goldman L-780 Mod VI
Constructing Shipyard .....	Far East Livingston, Singapore
Year Entered Service / Significant Upgrades .....	1998 / N/A
Classification.....	ABS A-1 Self Elevating Drilling Unit
Flag .....	Vanuatu
Overall Dimensions.....	250ft. long x 244ft. wide x 36ft. deep
Legs .....	3 x 560ft. long, Triangular Truss
Drafts .....	22.5ft. at loadline
Accommodation .....	120 persons
Displacement.....	29,302st atloadline
Variable Deck.....	7,372st operating / 3,984st transit
Transit Speed .....	5knots
Operating Water Depth .....	394ft. designed / 394ft. outfitted
Maximum Drilling Depth .....	30,000ft

### Drilling Equipment

Derrick	Dreco, 170ft. high, with 40ft. x 40ft. base.
Hookload Capacity	1,600,000lbs. static load capacity.
Cantilever	55ft. reach, forward / aft 15ft. port / 15ft. stbd. at center.
Drawworks	National Oilwell E-3000, 3 x GE 752 DC electric motors; 3,000hp, 1,527,800lbs. with 16 lines.
Rotary Table	Varco RST 49.5 49-1/2" hydraulic, 1,000st.
Top Drive	Varco TDS-4S, 750st capacity, with an electric motor, rated to 45,500ft.-lbs. continuous drilling torque in low gear.
Tubular Handling	Varco BJ PRS-3i, AR 3200-C.
Mud Pumps	3 x National Oilwell x 14-P-220, 2200 hp Triplex pumps, each driven by 2 x GE 752 Hi-Torque traction motors.
HP Mud System	Rated for 6,000psi.
Solids Control	4 x Derrick Flo-Line Cleaner Model 514VE.

### Power & Machinery

Main Power	4 x Wartsila 12V200 diesel engines rated at 2,850hp, 1,200rpm, each driving 1 x 3,000kVA AC generator.
Emergency Power	1x Caterpillar 3508 diesel engine rated 1,091hp, 1,800rpm driving 1 x Kato AC generator.

### Storage Capacities

Fuel Oil.....	3,431 bbls.
Liquid Mud.....	4,877 bbls.
Base Oil .....	1,627 bbls.
Brine.....	1,627 bbls.
Drill Water .....	33,194 bbls.
Potable Water .....	4,451 bbls.
Bulk Material .....	(mud + cement) 18,200 cu.ft.
Sack Storage .....	5,000 sacks

### BOP & Subsea Equipment

BOP Rams	GE Hydrill 18-3/4", inch, 15,000psi pressure capability; 2 x Double Ram preventers; (Compact). With 22", operator on B/S Ram and Shear Boost System.
BOP Annulars	NOV Shaffer 18-3/4", 10,000psi pressure capability, Type NXT
BOP Handling	VMW Industries/hydraulic 100 st
Diverter	49-1/2" 500psi Drill Quip diverter with 16" flow line

### Mooring Equipment

Mooring Winches	4 x Intercontinental SD 200, 75,000lbs pull capacity.
Anchor Lines	4 x 2" 6x36 IWRC galvanized wire rope.
Anchors	4 x Delta Flipper 7.5 st anchors.

### Cranes

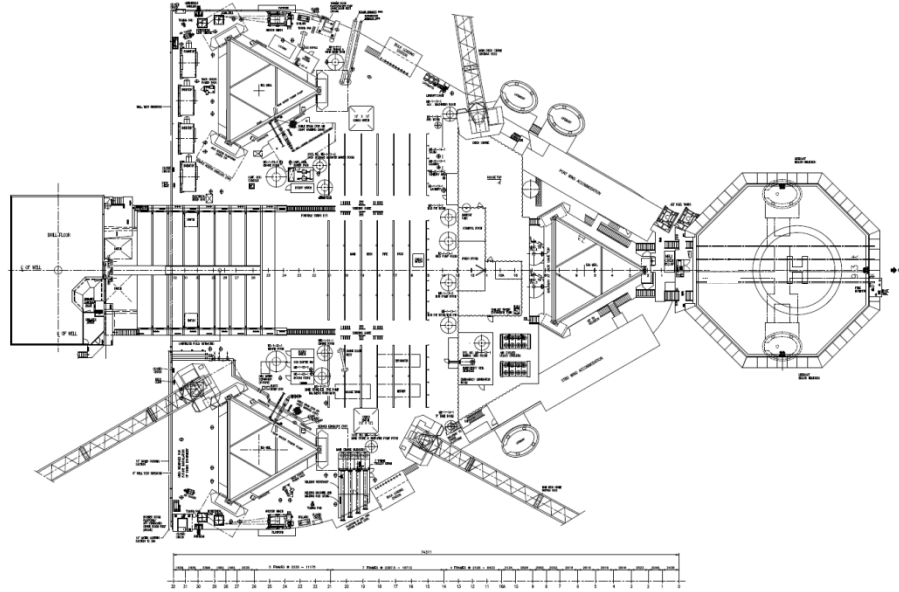
Cranes 1 and 2	2 x Seatrax 6032, rated to 52st with 120ft. booms. (Port and Stbd)
Crane 3	1 x Seatrax 6032, rated to 52st with 120ft. boom. (Aft)

### Special Features & Other Information

Helideck	Rated for Sikorsky S-61N, S-92 (max 10.5st) helicopters. 83ft.diameter.
Conductor Tens	Rated at 300st 8 x lift points, 24" stroke.
RPD System	Yes



These specifications are intended for general reference purposes only, as actual equipment and specifications may vary based upon subsequent changes, the contract situation and customer needs. All equipment shall be operated and maintained at all times, in compliance with Borr Drilling standard operating manuals, policies and procedures, and within its stated operational limits or continuous rated capacity, in order to assure maximum operational efficiency.



→ FWD

