

THOR

Additional information please

Borr Drilling Management DMCC
 Level 28 Reef Tower, Cluster O
 P.O. Box 36913
 Jumeirah Lakes Towers, Dubai United Arab
 Emirates
 marketing@borrdrilling.com - www.borrdrilling.com

High Specification Jackup

General Description

Design / GenerationKeppel FELS Super B Class
Constructing ShipyardKeppel Fels Singapore
Delivery Schedule Jan 2020
Classification ABS, A1 Self-elevating Drilling Unit, CDS
FlagLiberia
Overall Dimensions247 ft long x 230 ft wide x 27 ft deep
Legs(3) 517 ft long, triangular truss
Drafts 19 ft load line draft
Accommodation 150 persons
Displacement 41,625 kips at load line
Variable Deck9,700 kips elevated / 5,500 kips field transit
Operating Water Depth 400 ft
Maximum Drilling Depth 35,000 ft

Drilling Equipment

Derrick NOV SSBN rated 2200 kips, 170 ft clear working height, 40 ft x 40 ft base, derrick racking capacity: 368 stands of 5 7/8" drill pipe, 24 stands of 5-7/8" hwdp, 10 stands of 9 1/2" drill collars, 4 stands of bha

Hookload Capacity 2000 kips static hook load capacity

Cantilever 75 ft reach aft of transom, 15 ft port / 15 ft stbd of centerline

Drawworks NOV ADS-30Q, (4) 1500 hp AC motors, 2" drilling line

Rotary Table 49-1/2" NOV RST495-3G hydraulic, rated 2200 kips

Top Drive NOV TDX-1000, 2000 kips hoisting capacity, (2) 1150 hp AC motors, rated 91,000 ft-lbs continuous drilling torque, 120,000 lbs make-up torque

Tubular Handling NOV Bridge Racker BR-10mT, (1) ST-120 Roughneck, Catwalk Shuttle

Mud Pumps (3) NOV 14-P-220 triplex pump, rated 2200 hp, each driven by (2) DM27A AC motors

HP Mud System Rated for 7500 psi

Solids Control (5) VSM 300 shale shakers, (1) Brandt Hydrocyclones

Power & Machinery

Main Power (5) Caterpillar C175-16 engines, 2588 HP, 1200 RPM
 (5) Kato AC generator, rated 1,833 kW, 690 V, 60 Hz

Emergency Power (1) Caterpillar 3508B engine, rated 1298 HP, 1800 RPM
 (1) Stamford AC generator, rated 910 kW, 480 V, 60 Hz

Power Distribution NOV / ABB VFD system

Storage Capacities

Fuel Oil4,414 bbls
Liquid Mud5,199 bbls
Base Oil1,881 bbls
Brine2,251 bbls
Drill Water23,308 bbls
Potable Water3,846 bbls
Bulk Material(mud + cement) 16,000 cu.ft
Sack Storage5,000 sacks

BOP & Well Control Equipment

BOP Rams (2) Cameron TL 18-3/4" 15000 psi flanged Double type preventers

BOP Annular (1) NOV Shaffer 18 3/4" 10000 psi annular preventer

BOP Handling (4) Ingersoll Rand air hoists, rated 75 mT

Diverter GE KFDJ-500 diverter 49-1/2" rated 500 psi with 16" flow lines

Mooring Equipment

Mooring Winches (4) BROHL electric driven, 915 m drum capacity, 38 mm wire rope, 400 kN pull capacity and 1,000 kN brake holding capacity (first layer)

Anchor Lines (4) 1-3/4" IWRC 6 x 36 galvanized wire rope

Anchors (4) Delta Flipper anchors rated at 5 mT

Cranes

Deck Cranes (3) Seatrax S7228 deck cranes with 120ft booms, rated 65 mT at 50ft radius, Aux Hoist rated 12.96 mT all radius, located port forward, port aft and starboard forward

Knuckle Boom Crane (1) NOV Knuckle Boom pipe handling crane with lifting pad eyes 7 mT, with gripper yoke for 2-7/8" to 20" tubulars, 3.5 mT, located stbd side of cantilever deck

Cellar Deck Cranes (2) Multi Purpose Crane 15K-VP MPC with maintenance access basket

Special Features & Other Information

Helideck Rated for Sikorsky S-61N, S-92 and MI -17 helicopters, CAP 437 - 7th Edition

Work Offline (WO) (1) NOV ST-120 Roughneck, (2) NOV 10 mT Utility Winch, (1) NOV OSB Standbuilding System

CTU/STU Tensa RS300-60 vertical hydraulic tensioner unit, platform rated 600 kips, maximum 30" casing. Tensa PT200 secondary tensioner unit, rated 440 kips

Jacking System 6 pinions per chord, 3 x chords per leg, 1000 kips per pinion. 1300 kips per pinion for full preload jacking. RPD monitoring

Field Transit Capable of rig move with 660 kips of setback in the derrick, 2,000 bbls of mud in mud pits



These specifications are intended for general reference purposes only, as actual equipment and specifications may vary based upon subsequent changes, the contract situation and customer needs. All equipment shall be operated and maintained at all times, in compliance with Borr Drilling standard operating manuals, policies and procedures, and within its stated operational limits or continuous rated capacity, in order to assure maximum operational efficiency.

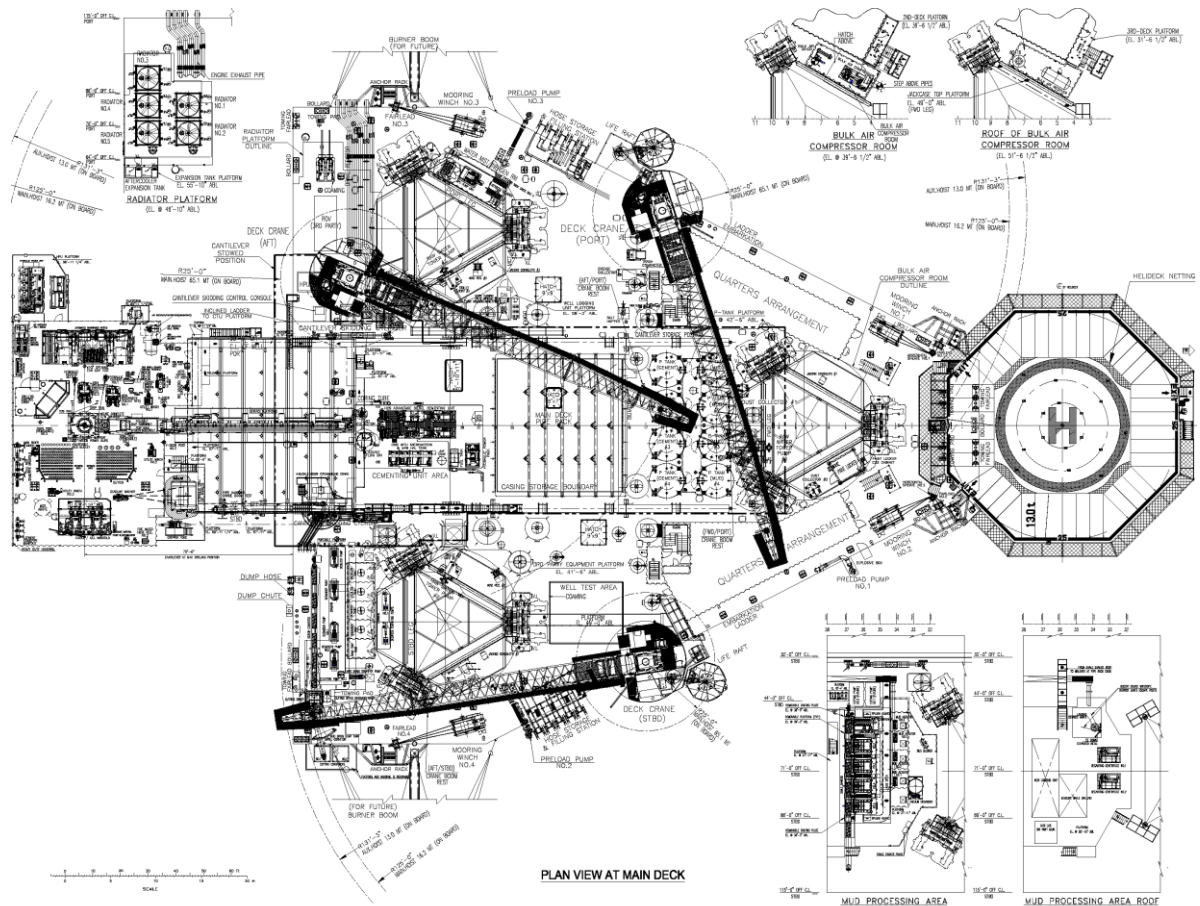
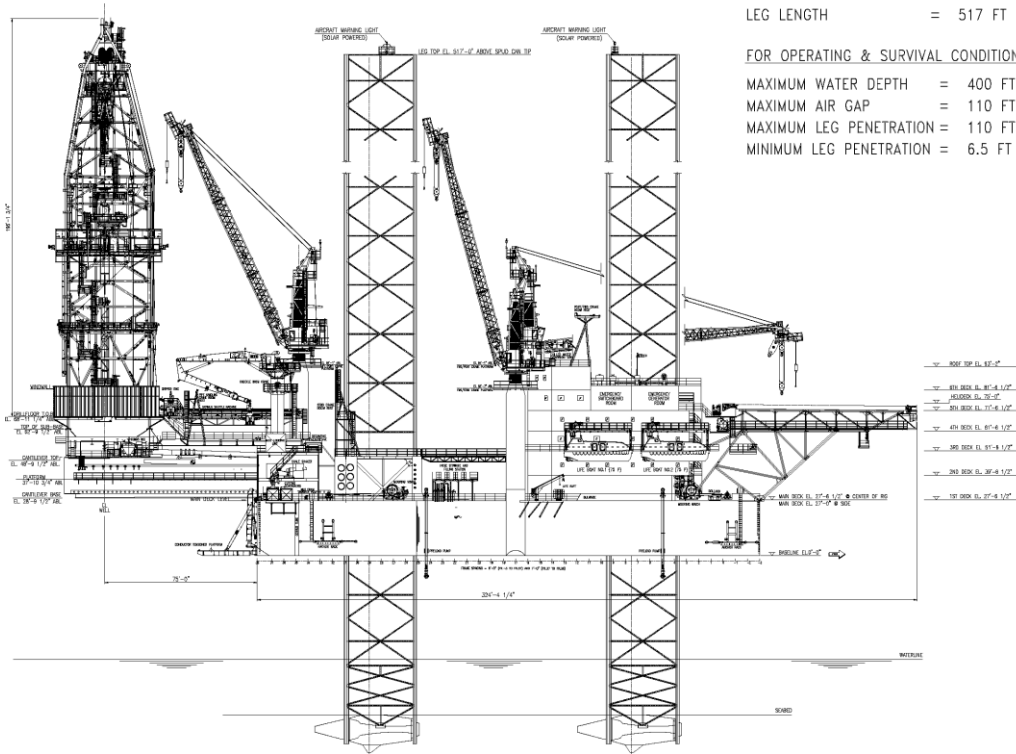
THOR

MAIN PARTICULARS:

VESSEL LENGTH	=	247 FT
VESSEL WIDTH	=	230 FT
VESSEL DEPTH AT SIDE	=	27 FT
COMPLEMENT	=	150 PERSONS
LEG LENGTH	=	517 FT

FOR OPERATING & SURVIVAL CONDITION:

MAXIMUM WATER DEPTH	=	400 FT
MAXIMUM AIR GAP	=	110 FT
MAXIMUM LEG PENETRATION	=	110 FT ABOVE TIP OF SPUD CAN
MINIMUM LEG PENETRATION	=	6.5 FT ABOVE TIP OF SPUD CAN



These specifications are intended for general reference purposes only, as actual equipment and specifications may vary based upon subsequent changes, the contract situation and customer needs. All equipment shall be operated and maintained at all times, in compliance with Borr Drilling standard operating manuals, policies and procedures, and within its stated operational limits or continuous rated capacity, in order to assure maximum operational efficiency.