

HEIDRUN

Additional information please

Borr Drilling Management DMCC
 Level 28 Reef Tower, Cluster O
 P.O. Box 36913
 Jumeirah Lakes Towers, Dubai United Arab
 Emirates
 marketing@borrdrilling.com - www.borrdrilling.com

High Specification Jackup

General Description

Design / GenerationKeppel FELS Super B Class
Constructing ShipyardKeppel Fels Singapore
Delivery ScheduleOct 2020
ClassificationABS, A1 Self-elevating Drilling Unit
Flag Panama
Overall Dimensions 234 ft long x 208 ft wide x 25 ft deep
Legs(3) 477 ft long, triangular truss
Drafts ft load line draft
Accommodation 120 persons
Displacement kips at load line
Variable Deck kips elevated / kips field transit
Operating Water Depth 350ft
Maximum Drilling Depth 30,000ft

Drilling Equipment

Derrick Lee C Moore, 160 ft high with 36 ft x 36 ft base
Hookload Capacity 1500 kips static hook load capacity
Cantilever 70 ft reach aft of transom, 15 ft port /15 ft stbd of centerline
Drawworks NOV ADS10T, (3) AC motors rated 1150 hp each, 1-5/8" drilling line
Rotary Table 49-1/2" NOV RST495-3G hydraulic, rated 1500 kips
Top Drive NOV TDS-8SA, load capacity 1500 kips, (1) GEB-20AC motor 1150 hp, 62,500 ft-lbs continuous torque at 90 rpm, 95,000 ft-lbs intermittent torque, maximum 270 rpm
Tubular Handling (1) NOV ST120 Iron Roughneck, (1) NOV PRS 8i/ HRXY, handles 3½"-9¾" pipe sizes, 22000 lbs hoisting capacity
Mud Pumps (3) NOV 14-P-220 triplex pumps, rated 2200 hp, each driven by (2) 5GEB 22D AC motors
HP Mud System Rated for 7500 psi
Solids Control (5) VSM 300 shale shakers, (1) Brandt Hydrocyclones

Power & Machinery

Main Power (5) Caterpillar 3516C-HD engine, rated 2150 hp 1200 rpm (5) Baylor generator, rated 1720 kW 600 V 60 Hz
Emergency Power (1) Caterpillar 3516B diesel engine, 1610 hp, 1200 rpm
Power Distribution NOV/ABB VFD system

Storage Capacities

Fuel Oil2,515 bbls
Liquid Mud4,500 bbls
Base Oil1,270 bbls
Brine1,000 bbls
Drill Water18,000 bbls
Potable Water2,050 bbls
Bulk Material(mud + cement) 12,800 cu-ft
Sack Storage5,000 sacks

BOP & Well Control Equipment

BOP Rams (2) NOV Shaffer NXT 18-3/4" double, 15000 psi
BOP Annular (1) NOV Shaffer 18 3/4" 10000 psi annular preventer
BOP Handling (2) Ingersoll-Rand air hoists, rated 75 mt
Diverter Vetco Gray diverter 49-1/2" rated at 500psi with 16" flow line

Mooring Equipment

Mooring Winches

Anchor Lines

Anchors

Cranes

Deck Cranes (1) Seatrax S7232, Main Hoist 70 mT at 20 ft radius, Aux Hoist 12.96 mT all radius, Boom length 130 ft
 (1) Seatrax S7232, Main Hoist 70 mT at 25 ft radius, Aux Hoist 12.96 mT all radius, Boom length 120 ft
 (1) Seatrax S7234, Main Hoist 56 mT at 25 ft radius, Aux Hoist 12.96 mT all radius, Boom length 120 ft

Special Features & Other Information

Helideck Rated for Sikorsky S-61N & S-92 helicopters, CAP 437 7th Edition

Work Offline (WO)

CTU

Conductor Tensioner Platform rated 500 kips, Tensa RS230B vertical hydraulic tensioner unit rated 500 kips, maximum 30" casing

Jacking System

4 pinions per chord, 3 x chords per leg, 1000 kips per pinion. 1300 kips per pinion emergency jacking. RPD monitoring, self-positioning fixation system

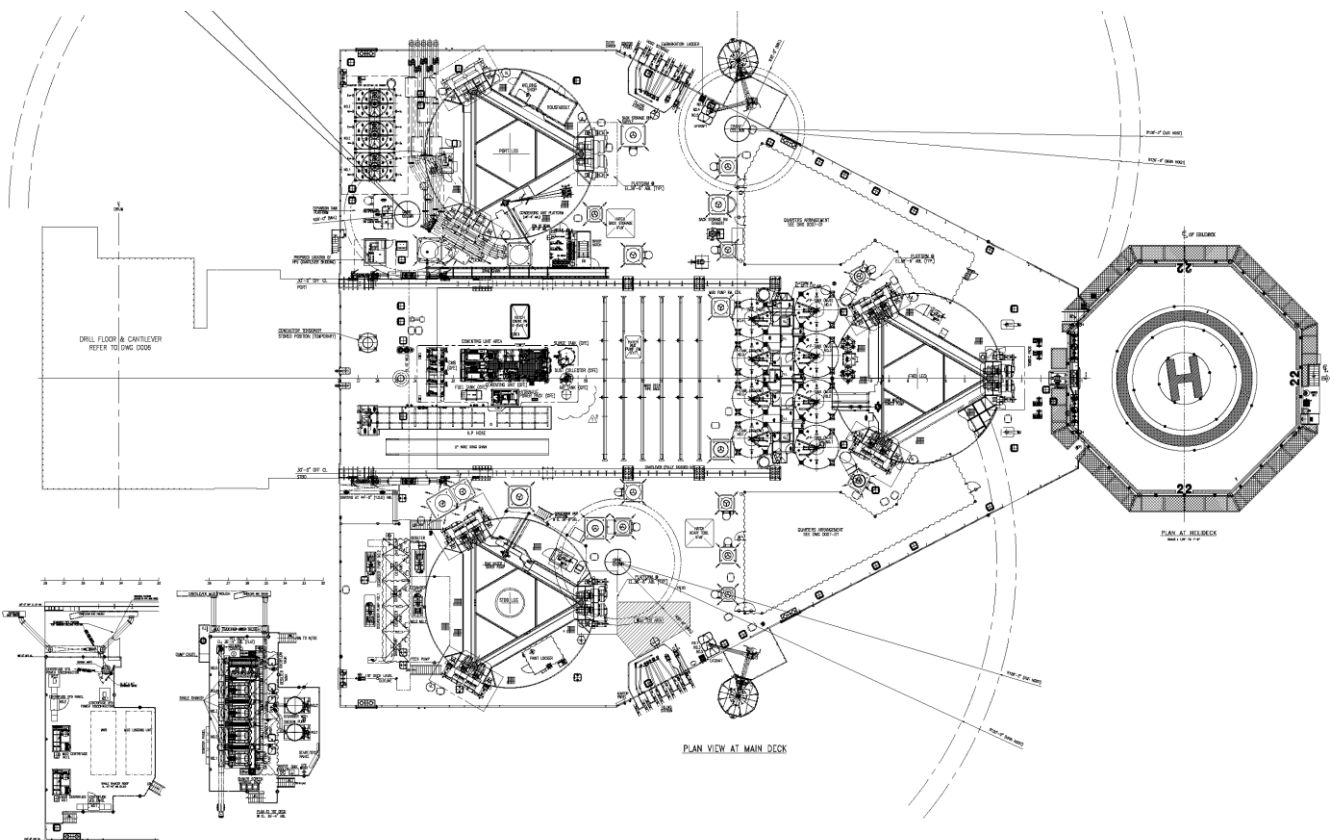
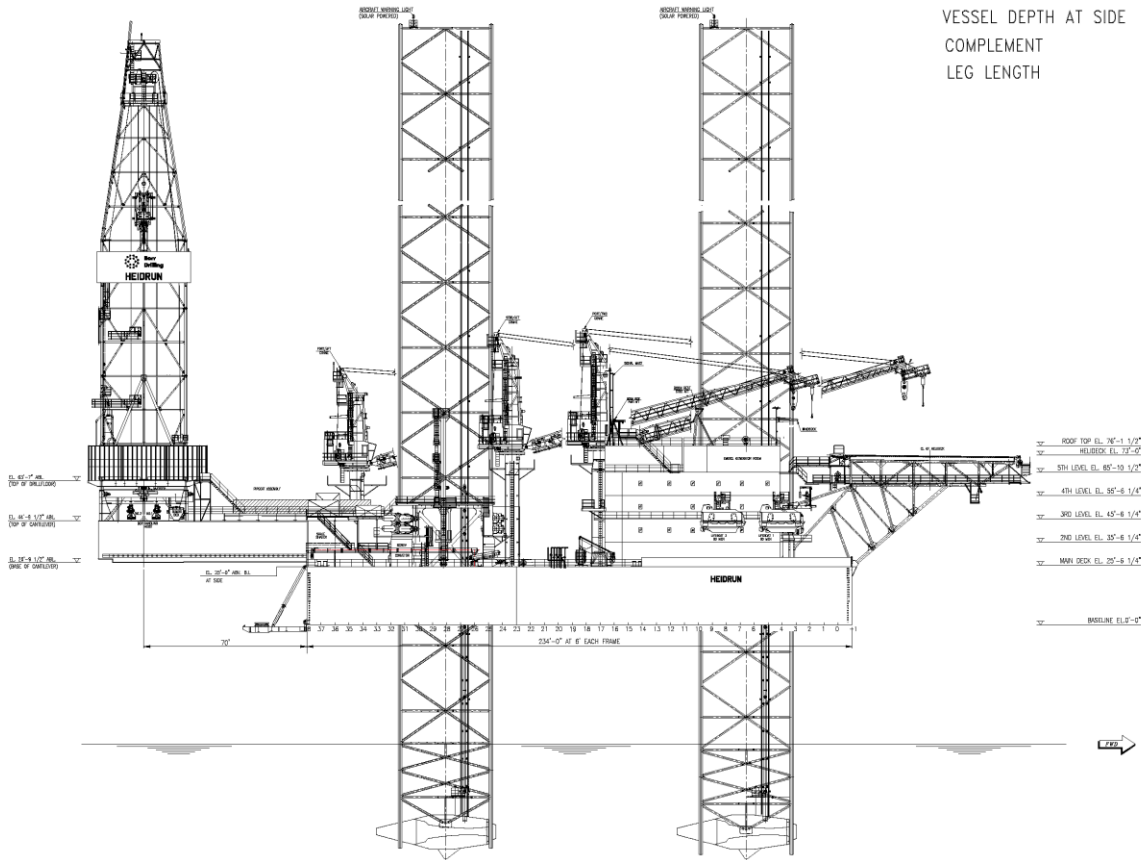


These specifications are intended for general reference purposes only, as actual equipment and specifications may vary based upon subsequent changes, the contract situation and customer needs. All equipment shall be operated and maintained at all times, in compliance with Borr Drilling standard operating manuals, policies and procedures, and within its stated operational limits or continuous rated capacity, in order to assure maximum operational efficiency.

HEIDRUN

MAIN PARTICULARS:

VESSEL LENGTH	=	234 FT
VESSEL WIDTH	=	208 FT
VESSEL DEPTH AT SIDE	=	25 FT
COMPLEMENT	=	120 MEN
LEG LENGTH	=	477 FT



These specifications are intended for general reference purposes only, as actual equipment and specifications may vary based upon subsequent changes, the contract situation and customer needs. All equipment shall be operated and maintained at all times, in compliance with Borr Drilling standard operating manuals, policies and procedures, and within its stated operational limits or continuous rated capacity, in order to assure maximum operational efficiency.